

Acq. Operator:

Sample Name : SL-168

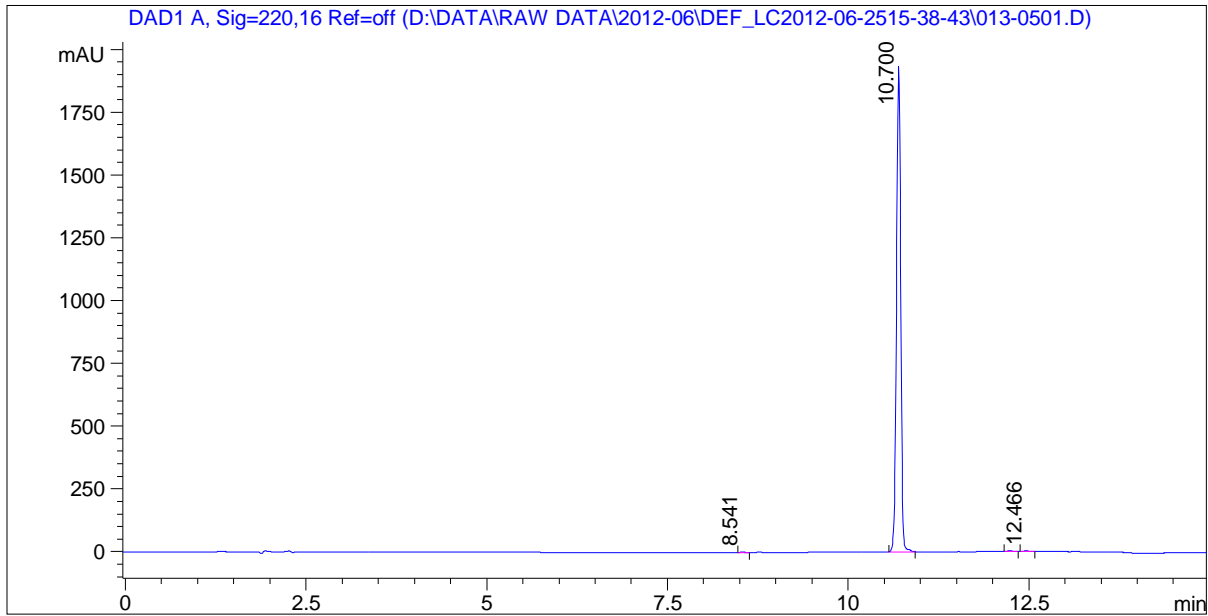
```
=====
Injection Date : Mon, 25. Jun. 2012      Seq Line   :           5
Data File      : D:\DATA\RAW DATA\2012-06\  Location    :       Vial 13
                DEF_LC2012-06-2515-38-43\    Inj. No.    :           1
                013-0501.D                   Inj. Vol.   :           1 µl
=====
```

```
Acq. Method    : D:\DATA\RAW DATA\2012-06\DEF_LC2012-06-2515-38-43\LC->
Last Changed   : (modified after loading)
Analysis Method: D:\DATA\RAW DATA\2012-06\DEF_LC2012-06-2515-38-43\LC-
                15MIN.M
```

```
Last Changed   : Mon, 25. Jun. 2012, 05:31:41 pm
                (modified after loading)
```

```
Method Info    : Instrument: Agilent 1100HPLC
                Column:C18 4.6*150mm 3.5um
```

Sample Info :



```
=====
                          Area Percent Report
=====
```

Sorted By Signal

```
Calib. Data Modified : Thu, 1. Jan. 1970, 08:00:00 am
Multiplier           : 1.000000
Dilution             : 1.000000
Uncalibrated Peaks   : not reported
```

Acq. Operator:

Sample Name : SL-168

=====
Signal 1: DAD1 A, Sig=220,16 Ref=off

Peak #	RT [min]	Type	Width [min]	Height	Area	Area %
1	8.541	BB	0.056	0.177	12.319	0.154
2	10.700	BB	0.066	99.438	7930.664	99.422
3	12.240	BB	0.072	0.208	19.364	0.243
4	12.466	BB	0.063	0.177	14.401	0.181

=====
*** End of Report ***