

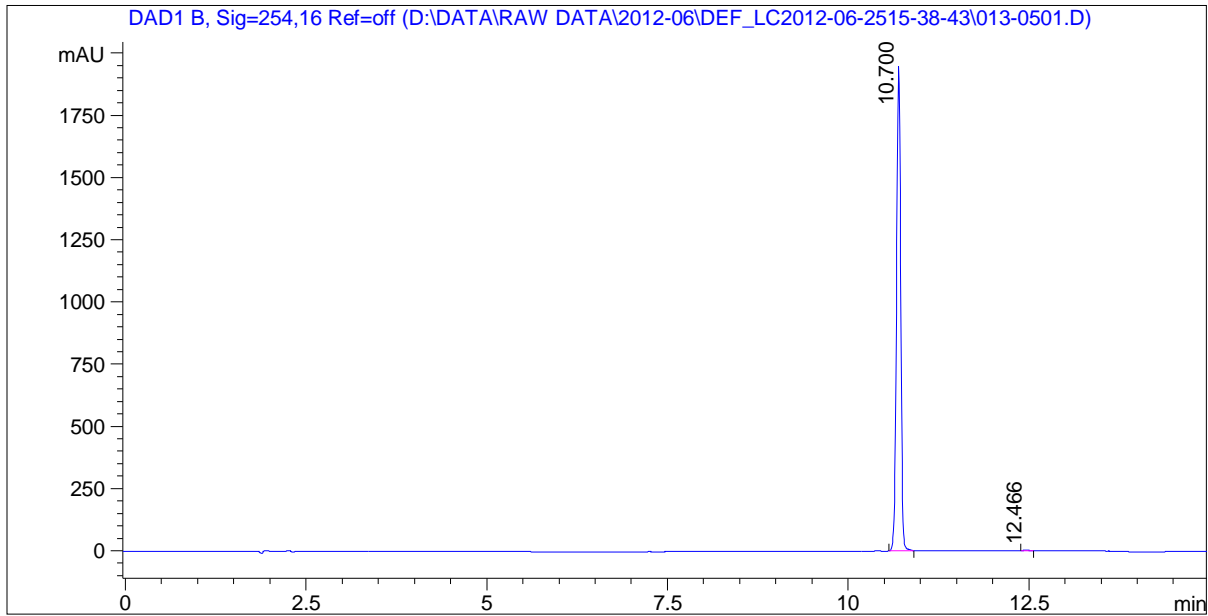
Acq. Operator:

Sample Name : SL-168

```
=====
Injection Date : Mon, 25. Jun. 2012      Seq Line   :           5
Data File      : D:\DATA\RAW DATA\2012-06\  Location    :       Vial 13
                DEF_LC2012-06-2515-38-43\    Inj. No.    :           1
                013-0501.D                   Inj. Vol.   :           1 µl
=====
```

```
Acq. Method    : D:\DATA\RAW DATA\2012-06\DEF_LC2012-06-2515-38-43\LC->
Last Changed   : (modified after loading)
Analysis Method: D:\DATA\RAW DATA\2012-06\DEF_LC2012-06-2515-38-43\LC-
                15MIN.M
Last Changed   : Mon, 25. Jun. 2012, 05:31:41 pm
                (modified after loading)
Method Info    : Instrument: Agilent 1100HPLC
                Column:C18 4.6*150mm 3.5um
```

Sample Info :



```
=====
                          Area Percent Report
=====
```

```
Sorted By Signal
Calib. Data Modified : Thu, 1. Jan. 1970, 08:00:00 am
Multiplier           : 1.000000
Dilution             : 1.000000
Uncalibrated Peaks   : not reported
```

Acq. Operator:

Sample Name : SL-168

=====  
Signal 1: DAD1 B, Sig=254,16 Ref=off

Peak #	RT [min]	Type	Width [min]	Height	Area	Area %
1	10.700	BB	0.066	99.831	7949.613	99.851
2	12.466	BB	0.056	0.169	11.839	0.149

-----

=====  
\*\*\* End of Report \*\*\*