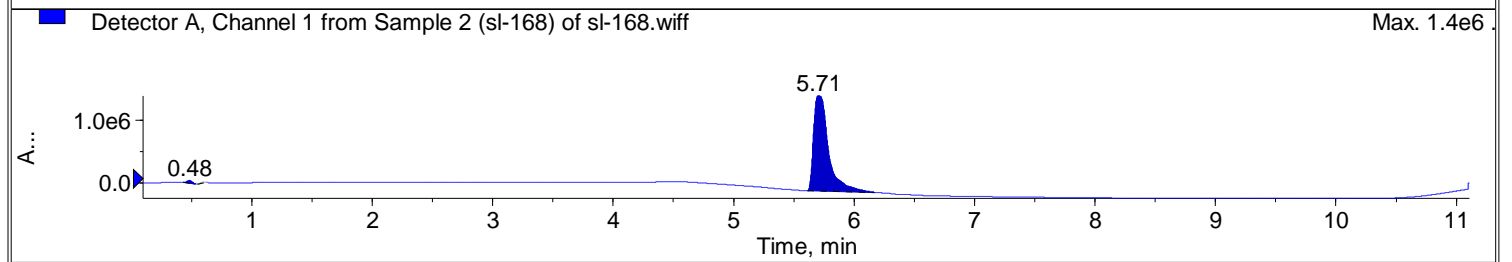


Peak List for "Detector A, Channel 2 from Sample 2 (sl-168) of sl-168.wiff"

	Time (min)	Area (counts)	%Area	Height	%Height	Width (min)	Baseline Type
1	5.7080	1.4207e7	100.0000	1.6874e6	100.0000	0.5767	Base to Base



Peak List for "Detector A, Channel 1 from Sample 2 (sl-168) of sl-168.wiff"

	Time (min)	Area (counts)	%Area	Height	%Height	Width (min)	Baseline Type
1	0.4836	1.2342e5	0.9429	4.2189e4	2.6955	0.1033	Base to Base
2	0.6050	2.3005e4	0.1758	5695.2659	0.3639	0.0700	Base to Base
3	5.7051	1.2943e7	98.8813	1.5173e6	96.9406	0.5533	Base to Base