

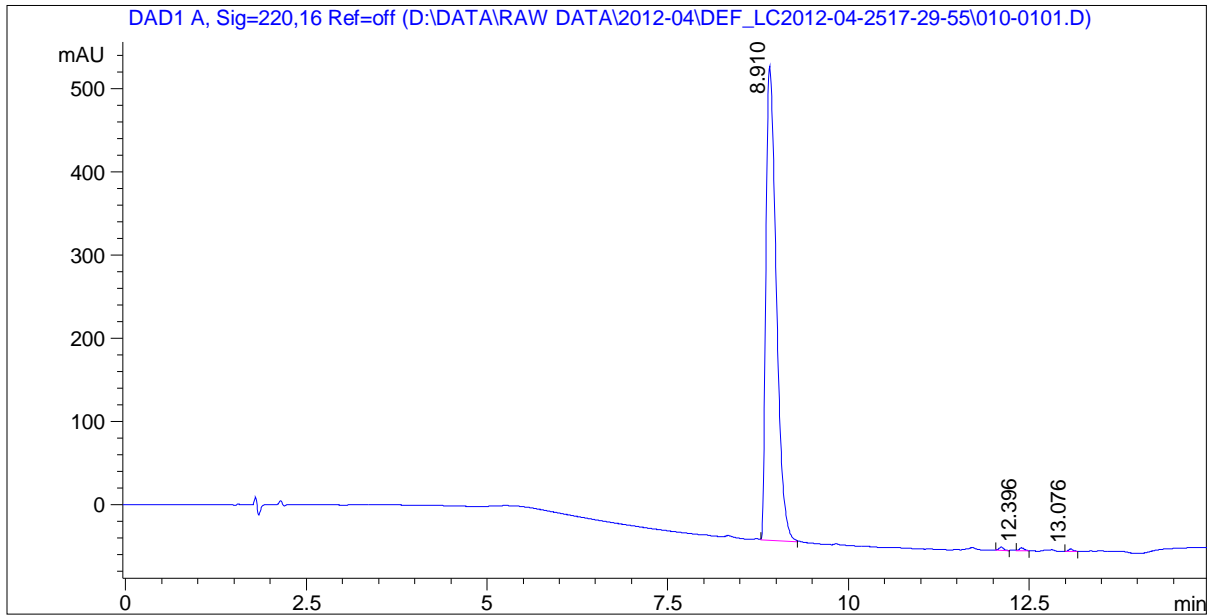
Acq. Operator:

Sample Name : SL-128-0425

```
=====
Injection Date : Wed, 25. Apr. 2012      Seq Line   :           1
Data File      : D:\DATA\RAW DATA\2012-04\  Location    :       Vial 10
                DEF_LC2012-04-2517-29-55\    Inj. No.    :           1
                010-0101.D                   Inj. Vol.   :           1 µl
=====
```

```
Acq. Method    : D:\DATA\RAW DATA\2012-04\DEF_LC2012-04-2517-29-55\LC->
Last Changed   : (modified after loading)
Analysis Method: D:\DATA\RAW DATA\2012-04\DEF_LC2012-04-2517-29-55\010-
                0101.D\DA.M (LC-15MIN.M)
Last Changed   : Thu, 26. Apr. 2012, 09:43:13 am
                (modified after loading)
Method Info    : Instrument: Agilent 1100HPLC
                Column:C18 4.6*150mm 3.5um
```

Sample Info :



```
=====
                          Area Percent Report
=====
```

Sorted By Signal

```
Calib. Data Modified : Thu, 1. Jan. 1970, 08:00:00 am
Multiplier           : 1.000000
Dilution             : 1.000000
Uncalibrated Peaks   : not reported
```

Acq. Operator:

Sample Name : SL-128-0425

=====
Signal 1: DAD1 A, Sig=220,16 Ref=off

Peak #	RT [min]	Type	Width [min]	Height	Area	Area %
1	8.910	BB	0.160	98.241	5691.206	99.212
2	12.113	BB	0.066	0.668	16.496	0.288
3	12.396	BB	0.073	0.610	17.334	0.302
4	13.076	BB	0.062	0.481	11.382	0.198

=====
*** End of Report ***