

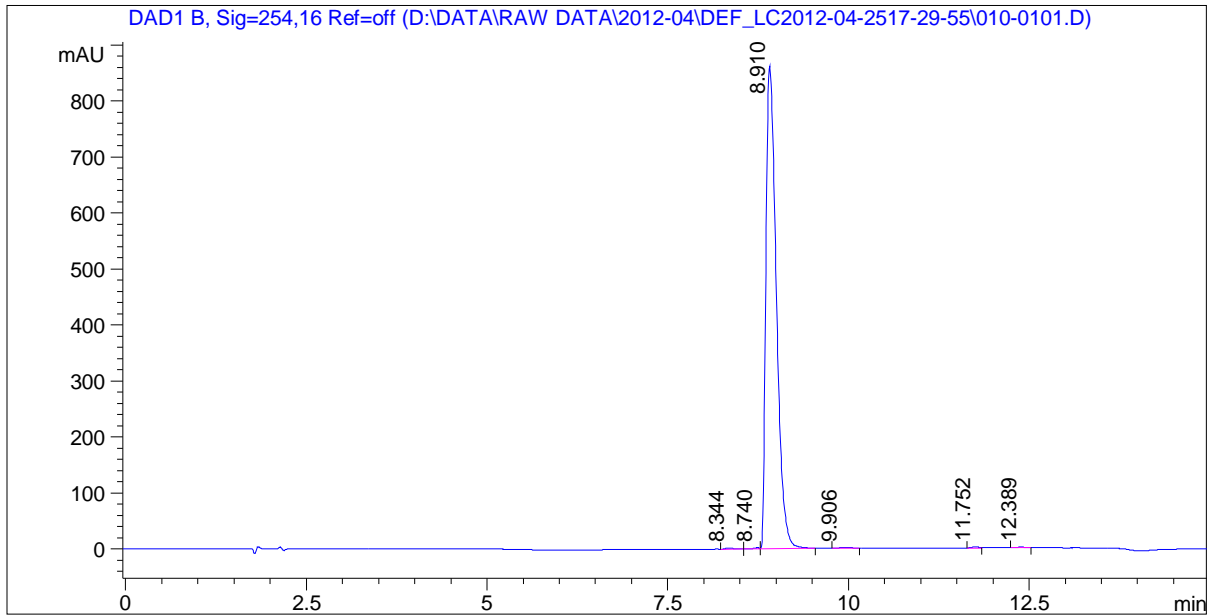
Acq. Operator:

Sample Name : SL-128-0425

```
=====
Injection Date : Wed, 25. Apr. 2012      Seq Line   :           1
Data File      : D:\DATA\RAW DATA\2012-04\  Location    :       Vial 10
                DEF_LC2012-04-2517-29-55\    Inj. No.    :           1
                010-0101.D                   Inj. Vol.   :           1 µl
=====
```

```
Acq. Method    : D:\DATA\RAW DATA\2012-04\DEF_LC2012-04-2517-29-55\LC->
Last Changed   : (modified after loading)
Analysis Method: D:\DATA\RAW DATA\2012-04\DEF_LC2012-04-2517-29-55\010-
                0101.D\DA.M (LC-15MIN.M)
Last Changed   : Thu, 26. Apr. 2012, 09:43:53 am
                (modified after loading)
Method Info    : Instrument: Agilent 1100HPLC
                Column:C18 4.6*150mm 3.5um
```

Sample Info :



```
=====
                          Area Percent Report
=====
```

Sorted By Signal

```
Calib. Data Modified : Thu, 1. Jan. 1970, 08:00:00 am
Multiplier           : 1.000000
Dilution             : 1.000000
Uncalibrated Peaks   : not reported
```

Acq. Operator:

Sample Name : SL-128-0425

=====
Signal 1: DAD1 B, Sig=254,16 Ref=off

Peak #	RT [min]	Type	Width [min]	Height	Area	Area %
1	8.344	VV	0.116	0.245	16.543	0.189
2	8.740	VV	0.099	0.232	13.638	0.156
3	8.910	VB	0.161	98.836	8668.994	99.136
4	9.906	BV	0.169	0.158	17.824	0.204
5	11.752	BV	0.094	0.291	16.228	0.186
6	12.389	VB	0.078	0.238	11.333	0.130

=====
*** End of Report ***