

KI0668 HPLC Analysis Report

Sample: Methyl dopa

Sample ID: KI0668

Buffer A: 0.1% TFA in 100% water (v/v)

Buffer B: 0.1% TFA in 80% acetonitrile + 20% water (v/v)

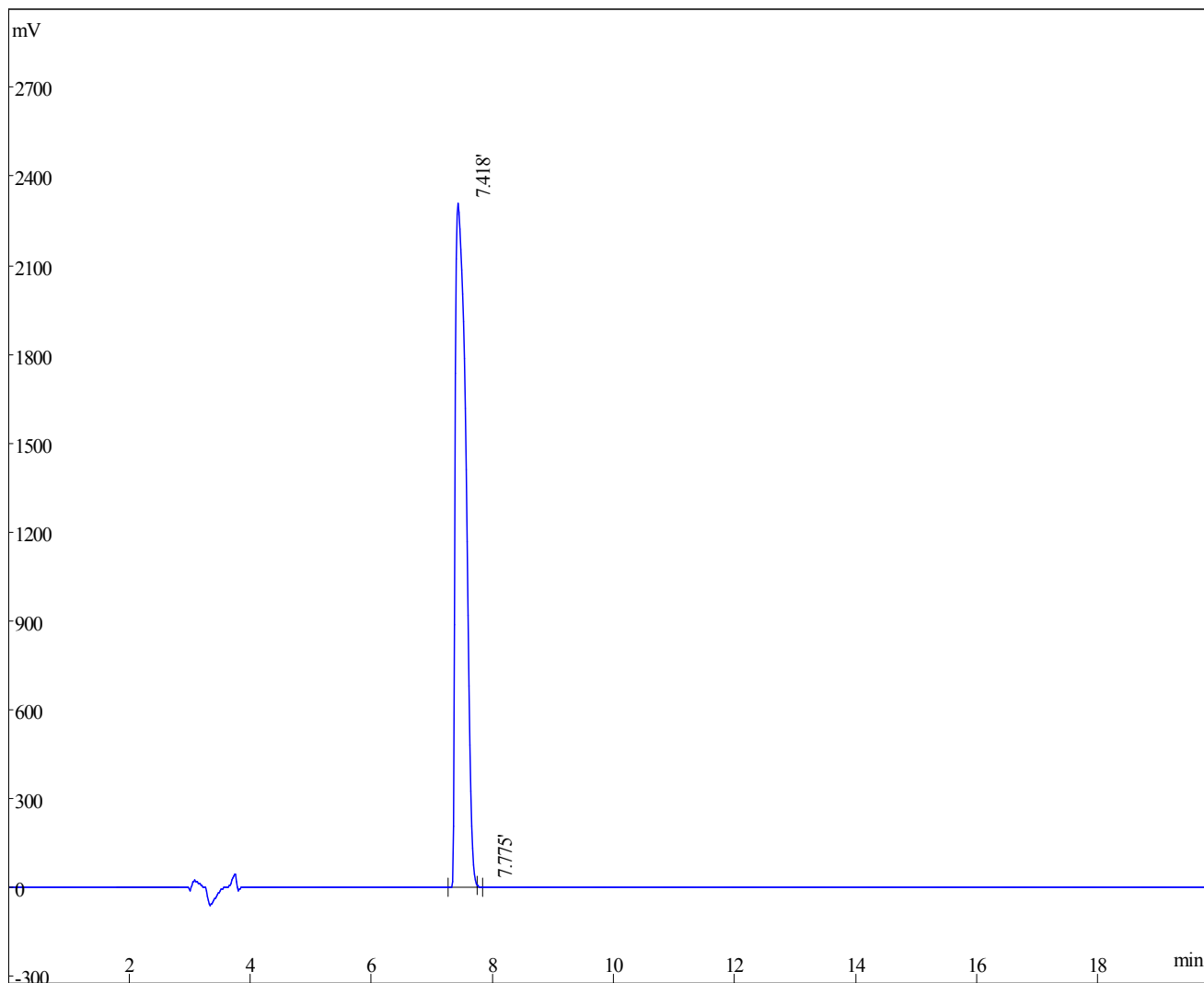
Gradient: 10-30% Buffer B in 20min

Flow: 1ml/min

Wavelength: 220nm

Column: Venusil C18 5um 4.6*250mm

Chromatogram



Signal	Peak#	RT (min)	Area%	Area (mAU*s)	Height (mAU)
	1	7.418	99.95	28024525	2309958
	2	7.775	0.04905	13752	4212
Total			100	28038277	2314170